

## UNDERTILE MEMBRANE

Material | UT Woven  
 Size of Roll | 1.5m x 30m  
 Thickness UM Min | 350mic



## OXIDE & NAILS



OXIDE

Type | Iron Oxide

Colours  
 BK, RED, BN, TAN, Terrecotta



Package | 2.5kg bucket

Material | Serrated Clout Nails  
 Length | 63 / 75 / 100 mm  
 Shank dia | 2.8mm  
 Pack size | 1Kg



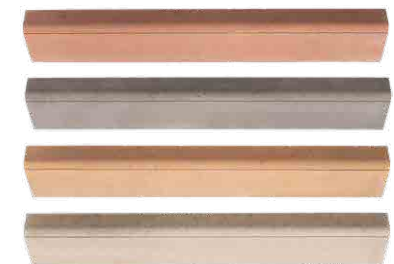
## CEMENT 32.5



## CEMENT 42.5



## CONCRETE GARDEN KERBS



Height | 150mm  
 Length x Width | 1000mm x 75mm  
 Transverse Strength | 2,5 kN  
 Weight of Kerb | 25.00Kg  
 Colours | Charcoal, Grey, Red & Tan



# CEM BRICK

CMACS  
 APPROVED



## TERMS

- All our products are manufactured using natural materials therefore colour variations can occur from batch to batch.
- All our products are susceptible to efflorescence that may cause temporary colour variations.
- CEMBRICK products are certified to comply with the South African National Standards for SANS 1215:2008 and SANS 542:2015 and SANS 1058:2012 as relevant, by the Concrete Manufacturers Association Certification Service (CMACS).
- All Products that are marked with \* next to the strength can be manufactured with a higher strength - made to order.
- All products can be delivered anywhere in South Africa at a competitive rate, ask your sales representative.
- \*(MTO) - Made to Order.

Please visit our website for more technical information and basic laying instructions.

[www.cembrick.co.za](http://www.cembrick.co.za)



ONLINE SHOPPING



FACEBOOK



LIKE US



WHATSAPP



INSTAGRAM



YOUTUBE



LINKEDIN



GOOGLE MAPS

T: 051 433 4479 or 051 433 4481

E: [info@cembrick.co.za](mailto:info@cembrick.co.za)

25 Rudolf Greyling Avenue, Estoire, Bloemfontein 9301

ANDREAS VILLOEN DESIGN | 082 7711 637



## GENERAL PRODUCTS



JUST CLICK

All products are hyperlinked to website



# CEM BRICK

WE MAKE CONCRETE PROMISES

CEM BRICK holds the CMA (Concrete Manufacturer's Association) mark.

We, as a company have established a brand in both private and public civil sectors.

We remain customer focused, enthusiastic and motivated.

We strive to lead by example and we as a company always make concrete promises.





**MODERN ELITE**

Overall size of the tiles (mm) 420mm x 332mm  
 Effective width (mm) 295mm  
 Nominal Tile Mass (kg) ± 5,4kg  
 Transverse Strength 5-N Average p/mm of width



FARMHOUSE COLOURS

NORMAL COLOURS



**DOUBLE ROMAN**

Overall size of the tiles (mm) 420mm x 330mm  
 Effective width (mm) 300mm  
 Nominal Tile Mass (kg) ± 4,3kg  
 Transverse Strength 5-N Average p/mm of width



FARMHOUSE COLOURS

NORMAL COLOURS



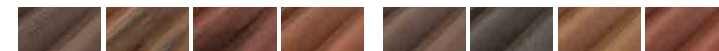
**VENETIAN**

Overall size of the tiles (mm) 420mm x 330mm  
 Effective width (mm) 302mm  
 Nominal Tile Mass (kg) ± 4,8kg  
 Transverse Strength 5-N Average p/mm of width



FARMHOUSE COLOURS

NORMAL COLOURS



**V-RIDGES**

Weight 3.9 kg  
 Dimensions 432mm x 248mm  
 No of fittings p/lm 2.3

**STARTERS**

Weight 3.7 kg  
 Dimensions 380mm x 248mm  
 No per Hip 1

**RAKES**

Weight 4.4 kg  
 Dimensions 420mm x 228mm  
 No of fittings p/lm 3 to 3.2

**MONOS**

Weight 5.6 kg  
 Dimensions 450mm x 230mm x 120mm  
 2.2

**3 WAYS**

Weight 11 kg  
 Dimensions 250mm x 3 ways  
 1



**TAPERED RIDGES**

Weight 3.5 kg  
 Dimensions 405mm x 238mm  
 No of fittings p/lm 3

**STARTERS**

Weight 4.4 kg  
 Dimensions 330mm x (190mm-220mm)  
 No per Hip 1



**BUILDING BLOCK**

Height 190mm  
 Length x Width 388mm x 138mm  
 Compressive Strength 4,0 Mpa average \*  
 No. bricks p/m<sup>2</sup> 12 (gauge dependant)  
 No. bricks per pallet 105 blocks  
 Weight per block ± 15,0 kg



**FLAT MAXI & DIAMOND MAXI**

Height 88mm  
 Length x Width 288mm x 140mm  
 Compressive Strength 8 Mpa average \*  
 No. bricks p/m<sup>2</sup> 33 (gauge dependant)  
 No. bricks per pallet 200  
 Weight per brick ± 7,9 kg



**STOCK BRICK**

Height 70mm  
 Length x Width 210mm x 98mm  
 Compressive Strength 8 Mpa average \*  
 No. bricks p/m<sup>2</sup> 54 (gauge dependant)  
 No. bricks per pallet 546  
 Weight per brick ± 3,050kg



**FLAGSTONES**

Thickness 60mm  
 Length x Width 400mm x 200mm  
 Modulus of Rapture (MoR) 5.0 Mpa  
 No. of bricks per m<sup>2</sup> 12.5  
 No. of bricks per pallet 120  
 No. of m<sup>2</sup> per pallet 9,60  
 Weight per brick +/- 10.850 kg  
 Colours Charcoal, Grey, Red, Tan & Black



**RECTANGULAR PAVERS**

Thickness 50mm  
 Length x Width 202mm x 101mm  
 Tensile Splitting Strength 2.0 MPA Average \*  
 No. of bricks p/m<sup>2</sup> 49  
 No. bricks per pallet 594  
 No. of m<sup>2</sup> per pallet 12.122  
 Weight per paver ± 2,230kg



**TUSCAN COBBLE**

Thickness 50mm  
 Length x Width 200mm x 200mm  
 Tensile Splitting Strength 2.0 MPA Average \*  
 No. of bricks p/m<sup>2</sup> 24.5  
 No. of bricks per pallet 312  
 No. of m<sup>2</sup> per pallet 12.736  
 Weight per paver ± 4,530kg



**SPECIALISED PAVERS**



**MTO ON OUR FLAGSTONES & RECTANGULAR PAVING RANGE**

MATT FINISH

GLOSS FINISH

**INTERLOCKER**

Thickness 60mm or 80mm  
 Length x Width 202mm x 101mm  
 Tensile Splitting Strength 2.0 MPA Average \*  
 No. of bricks p/m<sup>2</sup> 48  
 No. of bricks per pallet 60mm • 594 / 80mm • 486  
 No. of m<sup>2</sup> per pallet 60mm • 12,375 / 80mm • 10,125  
 Weight per paver 60mm • ± 2,600kg | 80mm • ± 3,600kg



**CYPRESS COBBLE**

Thickness 50mm  
 Length x Width 100mm x 100mm  
 Tensile Splitting Strength 2.0 MPA Average \*  
 No. of bricks p/m<sup>2</sup> 98  
 No. of bricks per pallet 1144  
 No. of m<sup>2</sup> per pallet 11,673  
 Weight per paver ± 1,020kg

